

9th WEARABLE EXPO

Wearable Device & Technology Expo

Post Show Report

January 25-27, 2023 Tokyo Big Sight, Japan
Organiser: RX Japan Ltd.

WEARABLE EXPO is a combination of the world's largest exhibition specialising in wearable device and technology and a grand conference presented by industry leaders from the wearable and electronics industries from all over the world.

International visitors and exhibitors were back!

No. of Visitors
Including Concurrent Shows

74,357 Visitors

Previous edition: 32,795 visitors

No. of Exhibitors
Including Concurrent Shows

1,420 Exhibitors

Previous edition: 1,064 exhibitors

Concurrent Shows

37th **NEPCON**
JAPAN
R&D and Manufacturing

2nd **SMART LOGISTICS Expo**

AUTOMOTIVE WORLD 2023

Factory Innovation Week 2023



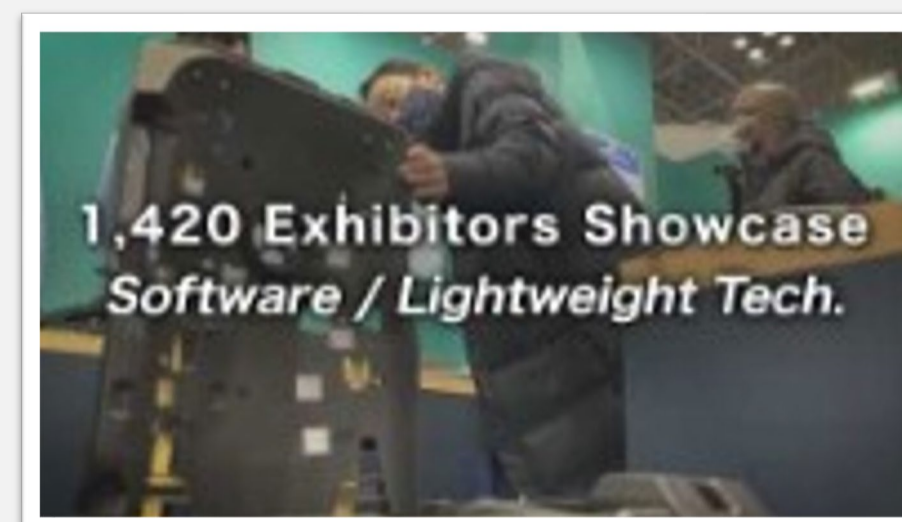
Tokyo Show was held on January 25-27, 2023

Watch these clips from Day 1

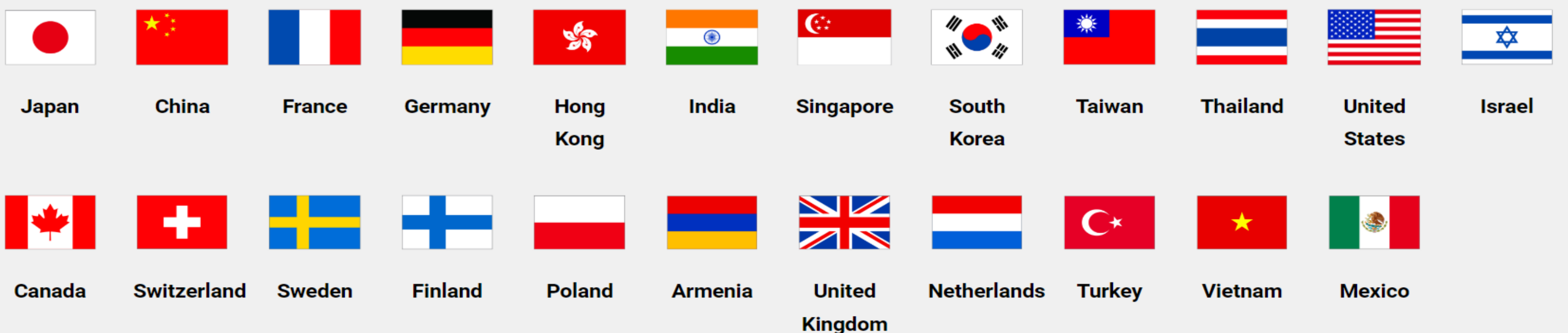
West Halls



East Halls



Exhibiting Countries/Regions



9th Wearable Expo & Concurrent Shows Photos



Conference by Industry Leaders

Keynote Speakers from top companies shared their knowledge at the event!



Yiwan Wong
Director, Technology Partnerships, Realty Labs, Meta Platforms Inc.



Mikio Iwamura
Executive Vice President, NTT QONOQ Inc.



Yuichi Murai
Deputy General Manager, Powertrain Production Engineering and Development Div., Nissan Motor Co., Ltd.



Atsunari Tsuda
Deputy General Administrative Manager, DX Div., Seiko Epson Corp.



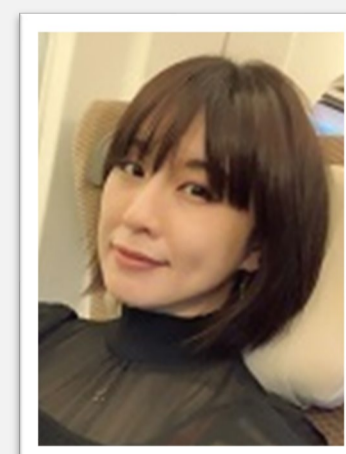
Seiji Nishino
Professor of Psychiatry & Behavioral Sciences, Stanford University School of Medicine/
Founder and Research Advisor, Brain Sleep Co., Ltd.



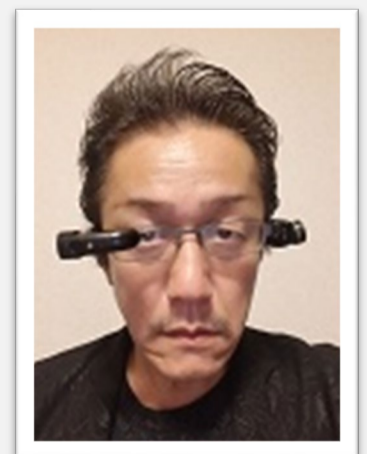
Masashi Yanagisawa
Director / Professor International Institute for Integrative Sleep Medicine (WPI-IIS) University of Tsukuba/
President, CEO S'UIMIN Inc.



Fukuda Kenjiro
Senior Research Scientist, RIKEN Thin-Film Device Laboratory/ Emergent Soft System Research Team, RIKEN



Emi Yuda
Assistant Professor, Center for Data-driven Science and Artificial Intelligence (CDS), Tohoku University

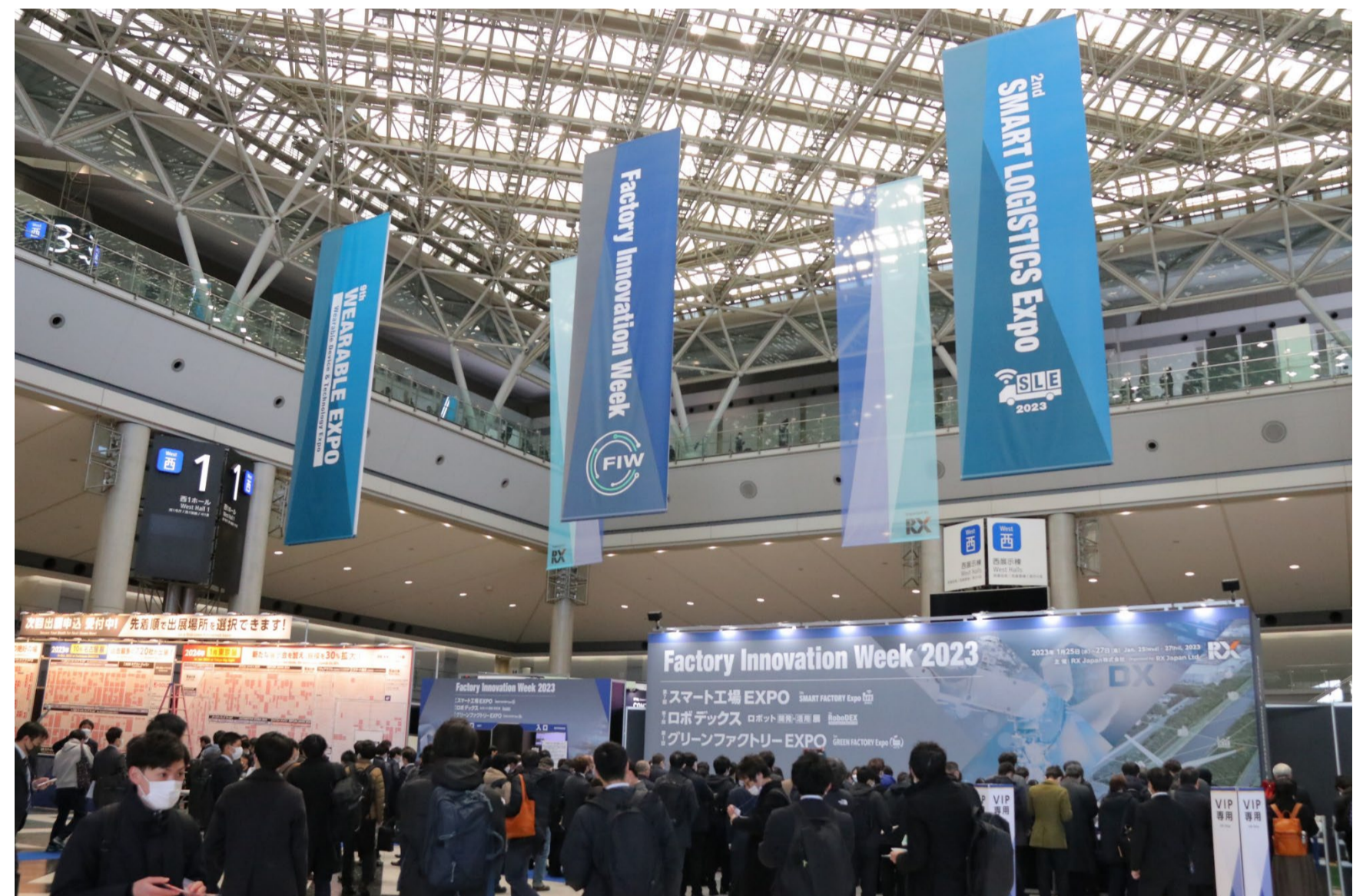


Masahiko Tsukamoto
Professor, Dept. of Electrical and Electronics Engineering, Faculty of Engineering, Graduate School of Engineering, Kobe University

*The following are partial introductions of the conference speakers. See more at the conference program page.

[Check the WEARABLE TOKYO's Conference Program >](#)

Photos from the Conference Venue



More Details

[Exhibitor List](#)

[Conference Program](#)

[Floor Map](#)

***Exhibit Space for the next exhibition is still available!
Reserve your booth now!***

[Exhibiting Info Request >](#)

Next Show Schedule

January 24-25, 2024 at Tokyo Big Sight, Japan

Built by
RX In the business of
building businesses

Organiser: RX Japan Ltd. Formerly Reed Exhibitions Japan Ltd. **Wearable Expo Show Management**

Office: 18F Shinjuku-Nomura Bldg., 1-26-2 Nishishinjuku, Shinjuku-ku, Tokyo 163-0570, Japan
TEL: +81-3-3349-8502 **FAX:** +81-3-3349-4900 **E-mail:** visitor-eng.wearable.jp@rxglobal.com
Web: <https://www.wearable-expo.jp/en-gb.html>
A division of Reed Business Registered in England, Number 678540